

Sigurd Lie

Suite for strykeorkester

G dur

Violoncello

Violoncello

Suite for strykeorkester

G dur

I

Allegretto

Sigurd Lie

7 *pp* 2

8

14 *pizz.*

20

26 *arco* *p*

32 *pizz.* *cresc.*

38 *arco* *p* *pizz.* *arco* *pizz.*

44 *arco* *pizz.* *arco* *pizz.* *p* *poco a poco cresc.*

50 *arco* *sempre cresc.*

56 *molto cresc.* *f*

62

68 *sempre f*

74 *mf*

80

86 *p poco a poco cresc.* *f*

92 *div* 4 *p espressivo*

101

107

113

119 *mf*

125 *p*

131 *cresc.*

137 *f*

143

p *sfz* *p* *piu cresc.*

149

p *sfz* *p*

155

sfz

161

p

167

un pochettino cresc.

173

piu p *pp*

179

185

pizz. *sempre pp*

191 *arco*
p

197 *pizz.*
cresc.

203 *arco*
p

209 *pizz.*
poco a poco cresc.

215

221 *arco*
mf *sempre cresc.* *f*

227

233 *sempre f*

239

245

pizz.

pp *p*

251

arco

mf

257

f

263

269

piu f *ff* *p*

275

mf

281

Tempo I
pizz.

molto rit. *p*

287

293

arco

pizz.

arco

decresc.

pp

299

Vlc.

II

Andante con moto *molto espress.*

p

cresc. *p*

mf *p* *molto cresc.*

f *decresc.* *p*

sf *p*

p

pp

45 Musical notation for measures 45-49 in bass clef, key of D major. It features a melodic line with slurs and a dynamic marking of *p* (piano) at the end.

50 Musical notation for measures 50-54 in bass clef, key of D major. It includes a *cresc.* (crescendo) marking and a dynamic marking of *mf* (mezzo-forte).

55 Musical notation for measures 55-62 in bass clef, key of D major. It features a *f* (forte) dynamic marking and the instruction *poco a poco più mosso* (little by little faster).

63 Musical notation for measures 63-67 in bass clef, key of D major. It continues the melodic development with slurs.

68 Musical notation for measures 68-71 in bass clef, key of D major. It includes the instruction *sempre più mosso e cresc.* (always faster and crescendo).

72 Musical notation for measures 72-75 in bass clef, key of D major. It features a *ff* (fortissimo) dynamic marking and the instruction *molto agitato* (very agitated).

76 Musical notation for measures 76-80 in bass clef, key of D major. It includes the instruction *poco a poco allargando e decresc.* (little by little slowing down and decrescendo).

81 Musical notation for measures 81-85 in bass clef, key of D major. It features a *mf* (mezzo-forte) dynamic marking and the instruction *sempre meno mosso* (always slower).

81 Musical staff 81: Bass clef, key signature of two flats, 4/4 time. Measures 81-85. Dynamics: *p*.

86 Musical staff 86: Bass clef, key signature of two flats, 4/4 time. Measures 86-90. Dynamics: *p*, *cresc.*

91 Musical staff 91: Bass clef, key signature of two flats, 4/4 time. Measures 91-95. Dynamics: *p*.

96 Musical staff 96: Bass clef, key signature of two flats, 4/4 time. Measures 96-100. Dynamics: *mf*, *p*, *molto cresc.*, *decresc.*

101 Musical staff 101: Bass clef, key signature of two flats, 4/4 time. Measures 101-105. Dynamics: *p*, *cresc.*, *mf*.

106 Musical staff 106: Bass clef, key signature of two flats, 4/4 time. Measures 106-110. Dynamics: *p*, *mf*.

111 Musical staff 111: Bass clef, key signature of two flats, 4/4 time. Measures 111-115. Dynamics: *molto cresc.*, *sfz*, *p*.

116 Musical staff 116: Bass clef, key signature of two flats, 4/4 time. Measures 116-120. Dynamics: *p*.

121

mf

126

p

132

pp

Vlc.

III

1 *Allegretto grazioso* *a tempo*

2 *p* *rit.* *a tempo* *p*

9

16

23 *p* *poco rit.* *a tempo*

30 *a tempo* *poco rit.* *p* *a tempo* *f*

37 *rit.* *a tempo* *poco rit.*

44 *a tempo* *poco rit.* *p* *a tempo*

51 *poco rit.* *a tempo* *f* *molto rit.*

65

72

79

86

93

100

108

115

129

mf

136

p

143

poco a poco cresc.

150

157

mf

co rit.

164

a tempo
p

171

cresc.

178

f

185

mf

192

pizz.
p

199

a tempo
p

212

219

f *p*

226

f più lento *ff* *p*
a tempo

233

240

piu p

247

sempre decresc.

255

pp

Vlc.

IV. Rondo

Allegro vivace

p

5

11

cresc.

17

f *mf*

23

p

28

div.

34

p

38

mf

42

cresc.

47

f

53

p *cresc.*

58

f *p* *meno mosso*

64

70

poco rit. *molto f*

76

fz

81

86

91

f

96

p

102 *poco rit.* *mf* *a tempo*

108

114

120 *f*

126 *mf*

131 *p*

136

140 *p* *cresc.*

144 *mf*

147 *p*

151 *p*

156 *f* 2

162 *soli* *mf*

167 *f* 8

178 4

185 *mf* *mp* *meno mosso*

188 *p*

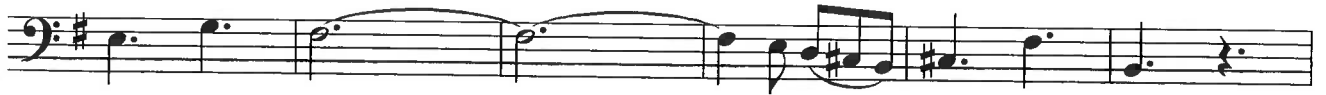
192 *marcato* *mf*

198 *a tempo*

203

The image shows a page of musical notation for a bass clef instrument. It consists of ten staves of music, each starting with a measure number. The key signature is one sharp (F#). The dynamics range from piano (*p*) to fortissimo (*f*). There are several articulations including slurs, accents, and a *sol* marking. A *marcato* marking appears at measure 192. The tempo marking *a tempo* is at measure 198. The notation includes various rhythmic values such as eighth and sixteenth notes, and rests. There are also some performance instructions like *meno mosso* and *sol*.

209



215



239



245



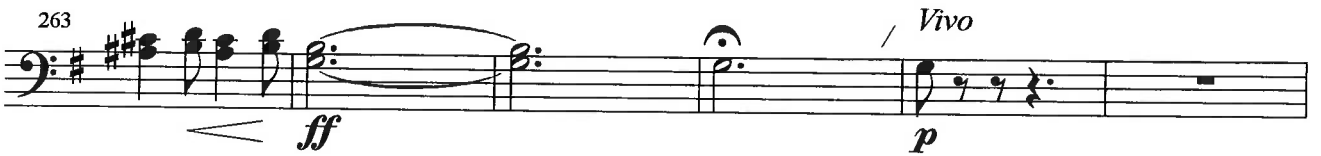
251



257



263



269

